



AMALGAMATED INDL COMPOSITES PVT. LTD.

AN ISO 9001-2015 CERTIFIED
Since 1984

DATASHEET OF JSR 1000

AICPL - JSR 1000 is a carbon composites paper which has been used for PAFC & PEFC. Its high mechanical strength conductivity and gas permeability are suitable for use in fuel cell applications.

Characteristics

- ❖ High strength
- ❖ Good handling.
- ❖ Excellent gas permeability and low Electrical resistivity.
- ❖ Minimal electrochemical corrosion.

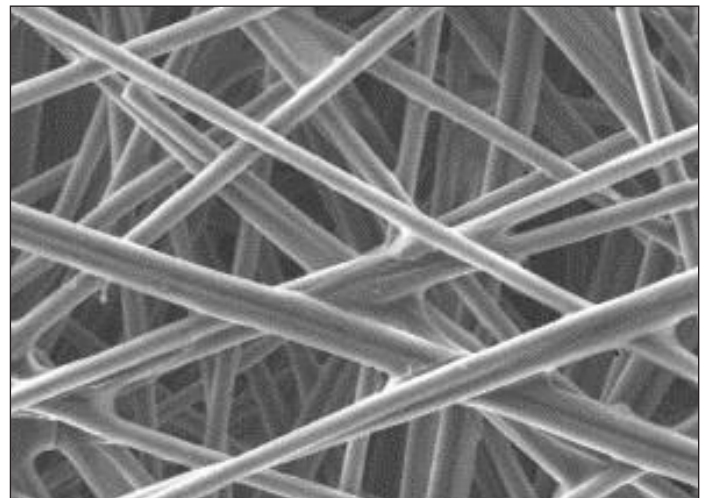
Type Parameters

JSR-1000

Thickness	1 mm
Porosity	> 70%
Pore Size Range	10 – 60 μ
In plane Resistivity	$\leq 0.005 \Omega\text{CM}$
Through Plane Resistivity	$\leq 0.08 \Omega\text{CM}$
Flexural Strength	$\geq 40-45 \text{ MPA}$
Bulk Density	0.45-0.52GM/CC
Available Sizes (in MM)	100x100, 200x200, 300x300, 340x440, 450x450, 500x500 and bigger sizes as per requirement



AICPL - JSR 1000



SEM